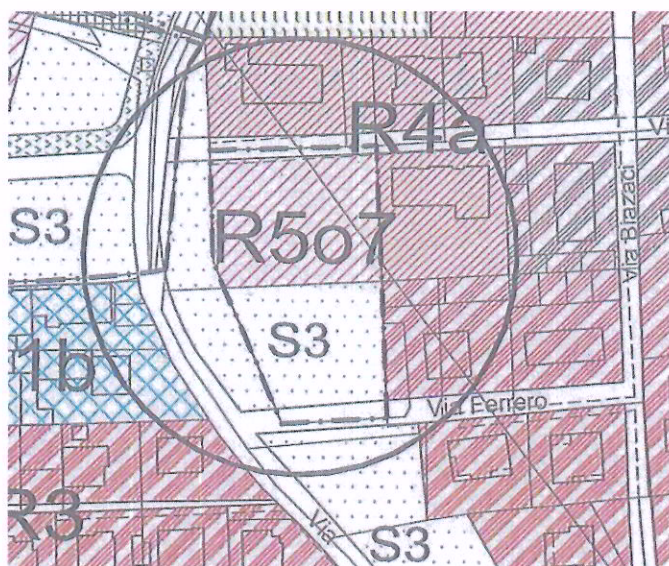


allegato alla **RELAZIONE ILLUSTRATIVA**

COMUNE di BUSCA (CN)
Via Ferrero - Via Monte Ollero - Via Giotto

PROPOSTA di P.E.C.
zona **R5o7** di **PRG**
Foglio 57 – mapp. 660 – tot mq. 3476

proponenti:
LAVAGNA MATTEO
ARMANDO LUISA ANGELA



conteggi allegati alla
RELAZIONE ILLUSTRATIVA
Sup. Coperta - Area Verde Privata - S.U.L.
Sup. Residenziale - Sup. non Residenziale

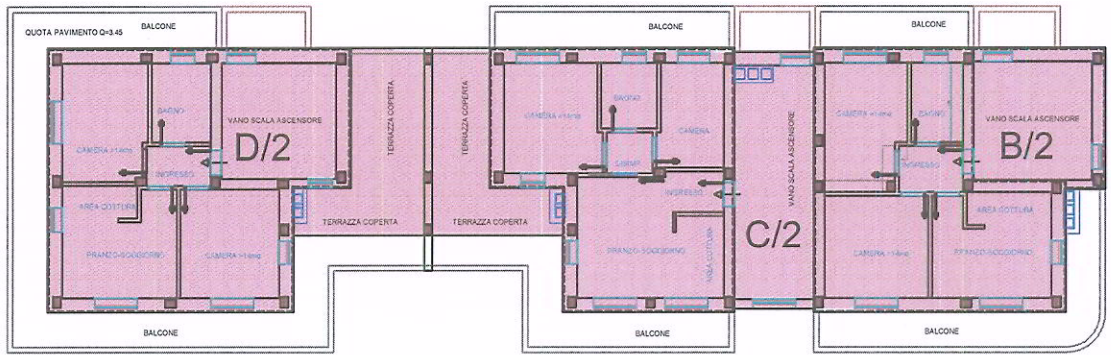
I RICHIEDENTI

IL PROGETTISTA

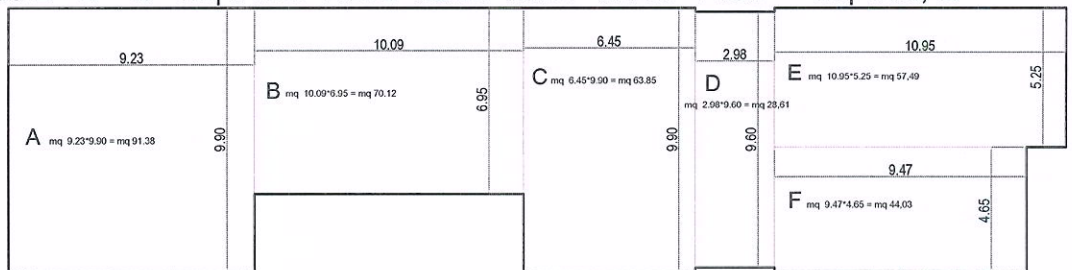
Ingegnere
Matteo LAVAGNA
Via Langhe 4 - BUSCA

CALCOLO SUPERFICIE COPERTA

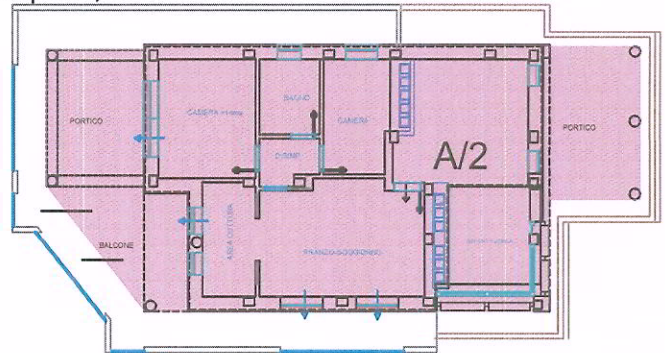
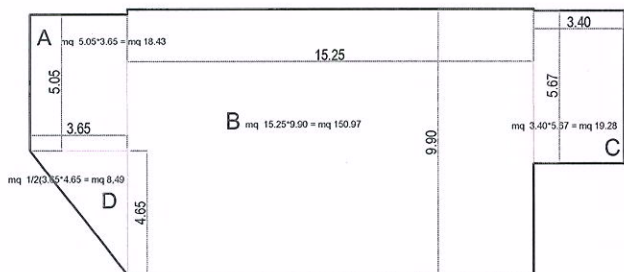
TOT mq. 355.48 + 197.17 = mq. 552,65



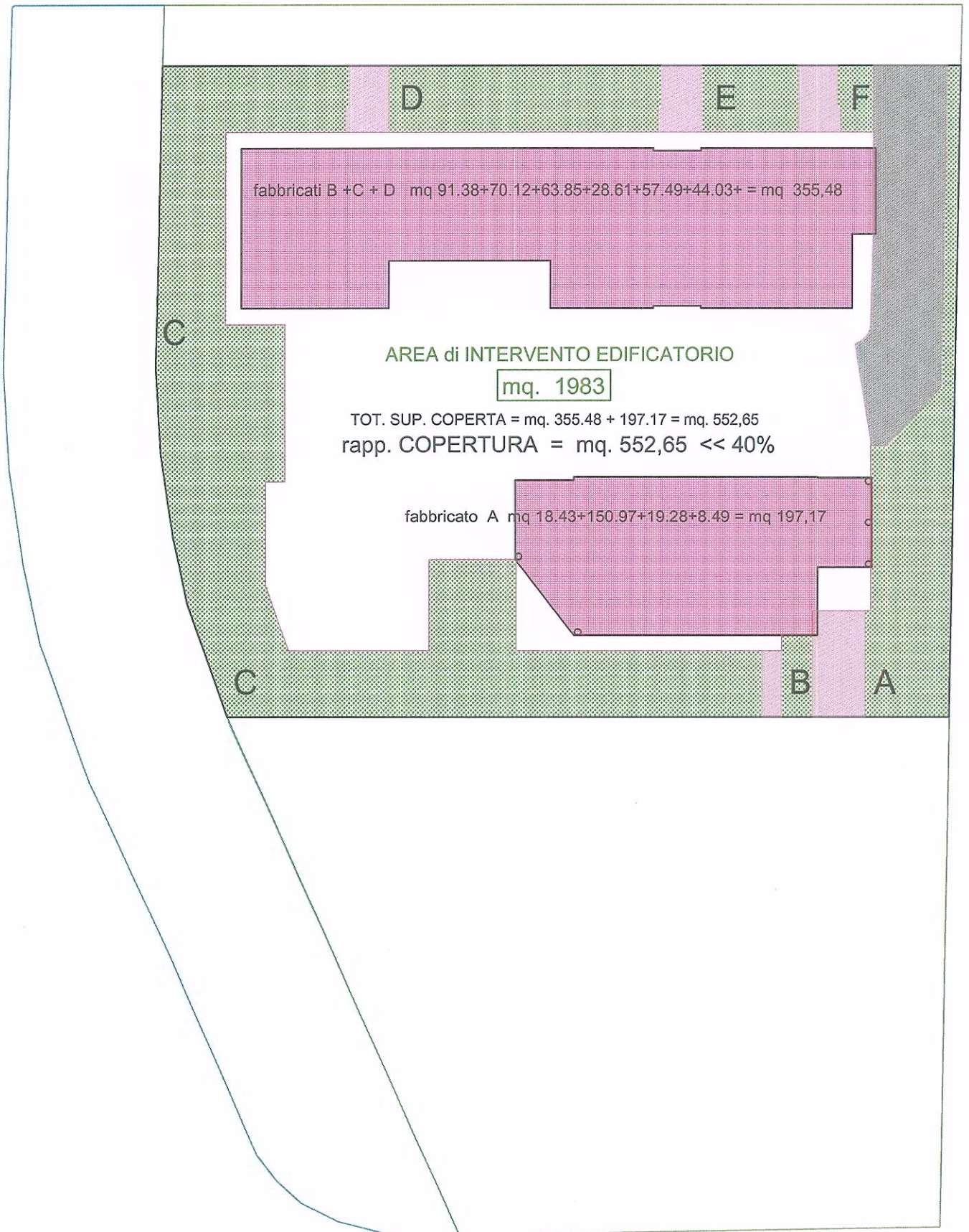
fabbricati B + C + D mq 91.38+70.12+63.85+28.61+57.49+44.03+ = mq 355,48



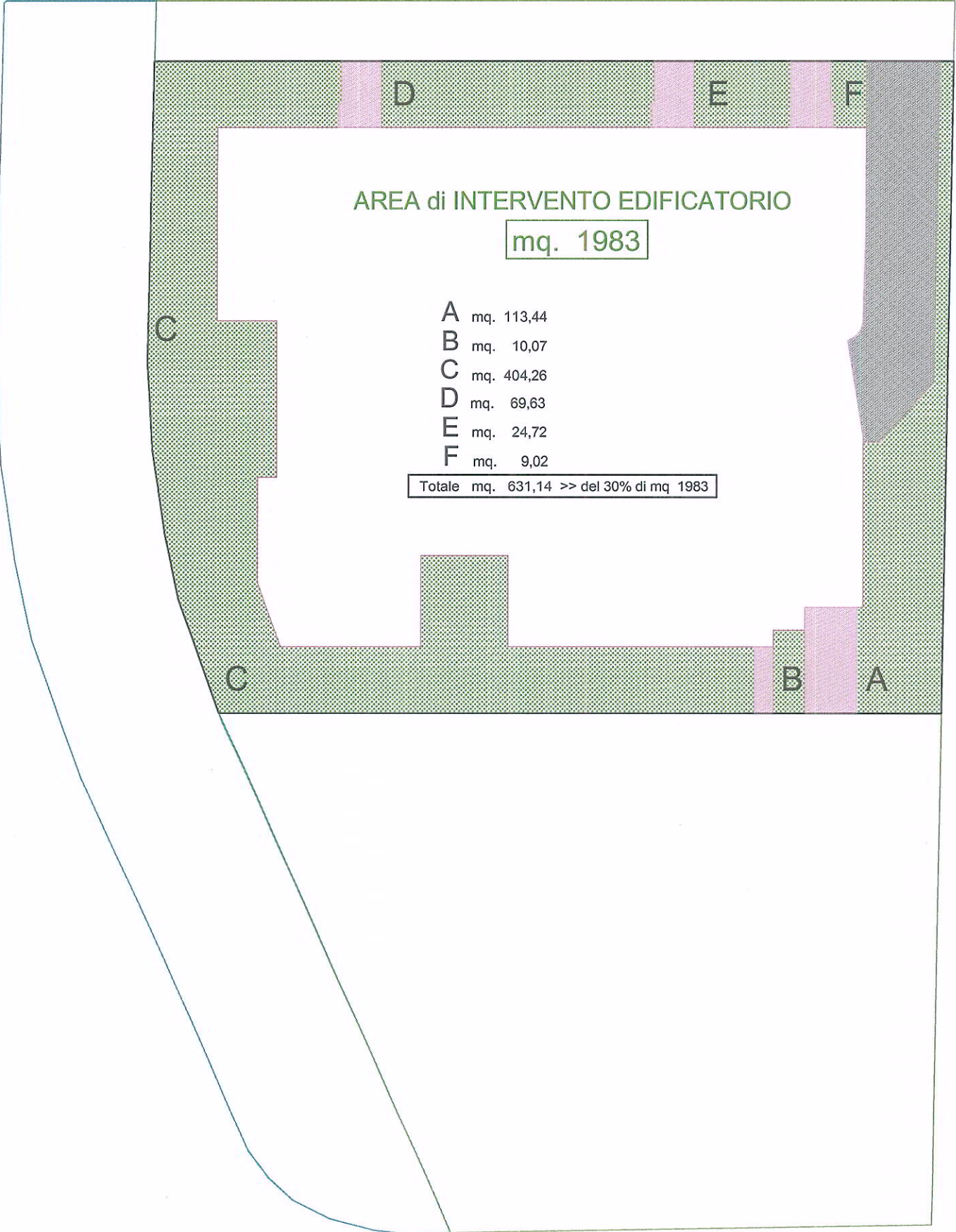
fabbricato A mq 18.43+150.97+19.28+8.49 = mq 197,17



CALCOLO SUPERFICIE COPERTA

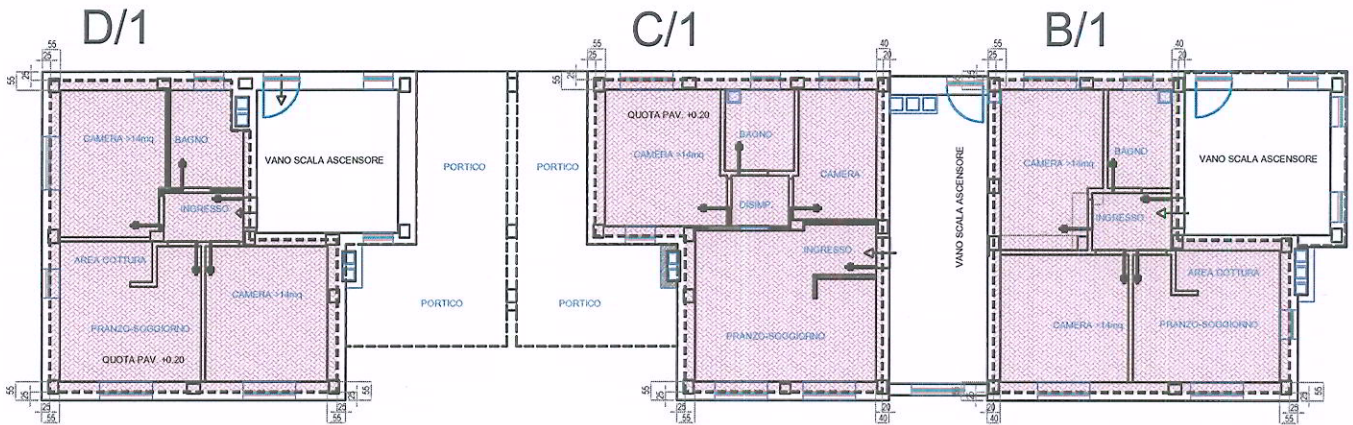


CALCOLO AREA VERDE PRIVATA

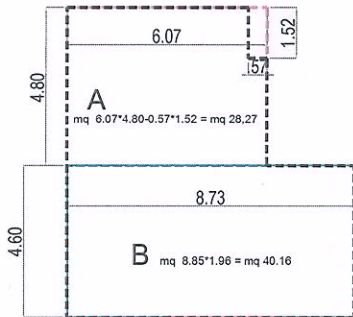


CALCOLO S.U.L. PIANO TERRA

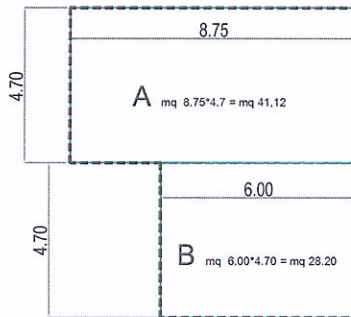
SUL TOT. mq. 68,43 + 69,32 + 68,37 + 82,85 = mq. 288,97



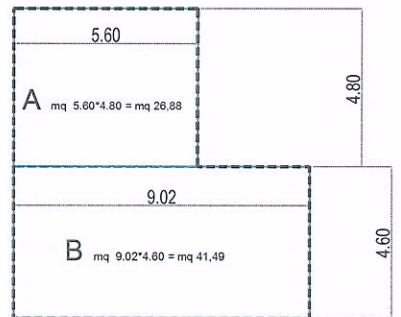
D/1 SUL mq. 28,27+40,16 = mq 68,43



C/1 SUL mq. 41.12+28.20 = mq 69,32

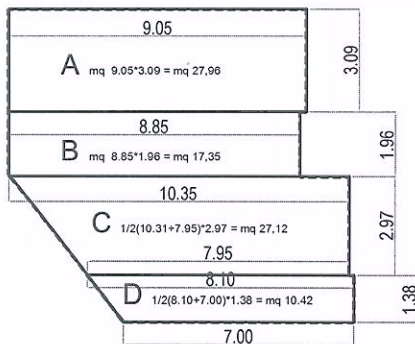


B/1 SUL mq. 26.88+41.49 = mq 68,37



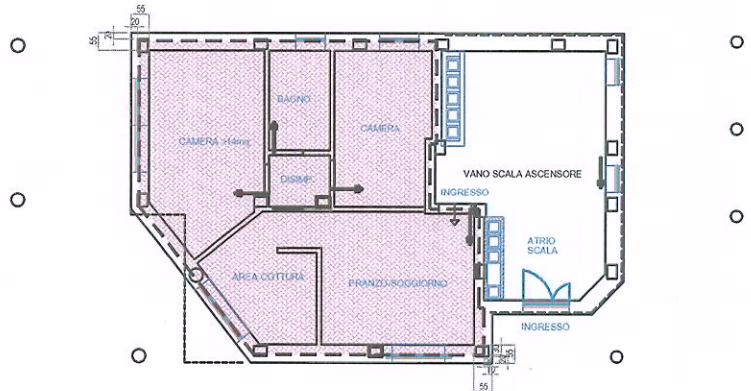
A/1

SUL mq. 27.96+17.35+27.12+10.42 = mq 82,85



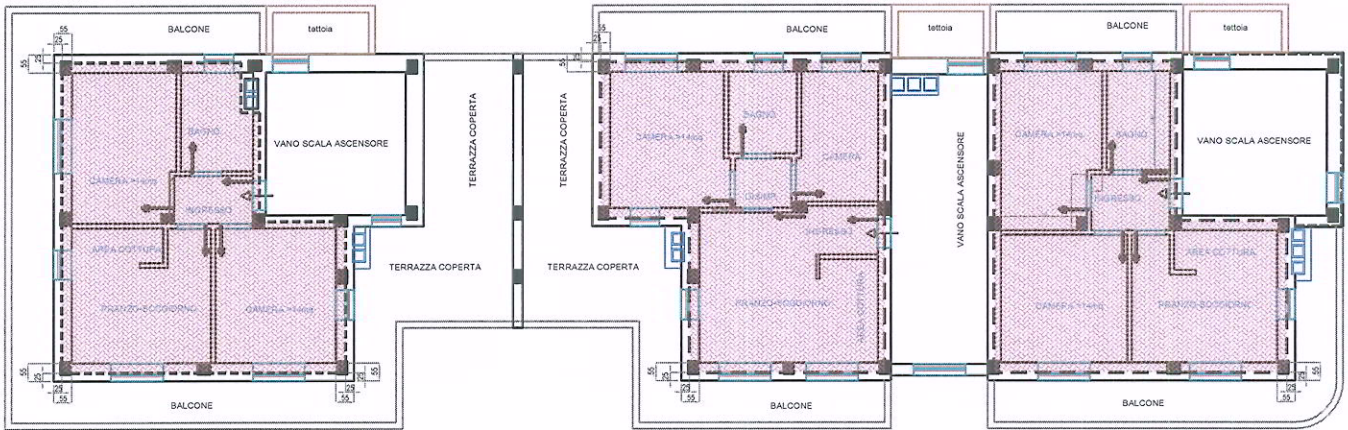
A/1

SUL mq. 27.96+17.35+27.12+10.42 = mq 82,85

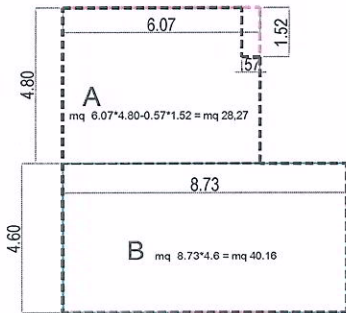


CALCOLO S.U.L. PIANO PRIMO

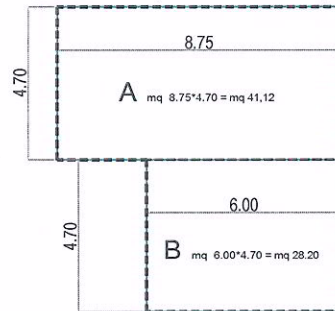
SUL TOT. mq. 68,43 + 69,32 + 68,37 + 84,16 = mq. 290,28



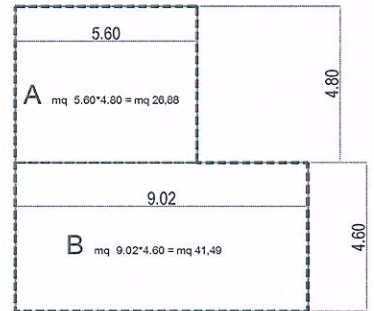
D/2 SUL mq.28,27+40.16 = mq 68,43



C/2 SUL mq. 41.12+28.20 = mq 69,32

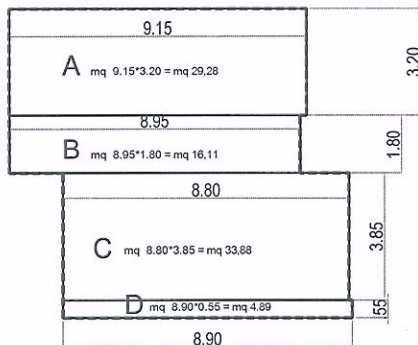


B/2 SUL mq. 26.88+41.49 = mq 68,37

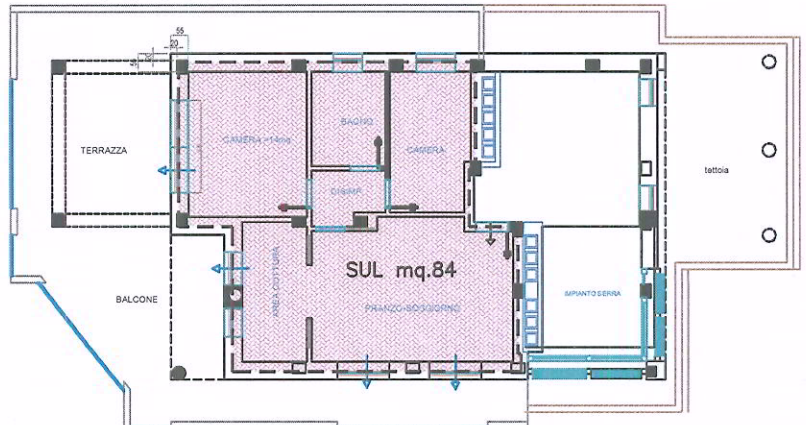


A/2

SUL mq.29.28+16.11+33.88+4.89 = mq 84.16



A/2 SUL mq.29.28+16.11+33.88+4.89 = mq 84.16



SUL TOT. mq. 288,97 + 290,28 = mq. 579,25

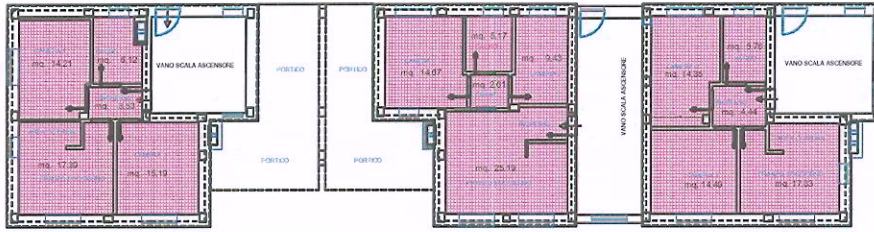
CALCOLO S.R. PIANO TERRA

S.R. TOT. piano T = mq. 56,44+57,07+56,37+69,74 = mq. 239,62

D/1 - S.Residenziale mq. 56,44

C/1 - S.Residenziale mq. 57,07

B/1 - S.Residenziale mq. 56,37



D/1

CAMERA 1	mq. 14,21
CAMERA 2	mq. 15,19
PRANZO-SOGGIORNO	mq. 17,39
INGRESSO	mq. 3,53
BAGNO	mq. 6,12

D/1 - S.Residenziale mq. 56,44

C/1

CAMERA 1	mq. 14,67
CAMERA 2	mq. 9,43
PRANZO-SOGGIORNO	mq. 25,19
DISIMP.	mq. 2,61
BAGNO	mq. 5,17

C/1 - S.Residenziale mq. 57,07

B/1

CAMERA 1	mq. 14,49
CAMERA 2	mq. 14,35
PRANZO-SOGGIORNO	mq. 17,33
INGRESSO	mq. 4,44
BAGNO	mq. 5,76

B/1 - S.Residenziale mq. 56,37

A/1

CAMERA 1	mq. 19,04
CAMERA 2	mq. 13,50
PRANZO-SOGGIORNO	mq. 28,88
DISIMP.	mq. 2,77
BAGNO	mq. 5,55

A/1 - S.Residenziale mq. 69,74

A/1 - S.Residenziale mq. 69,74



S.R. TOT. mq. 239,62+240,55 = mq. 480,17

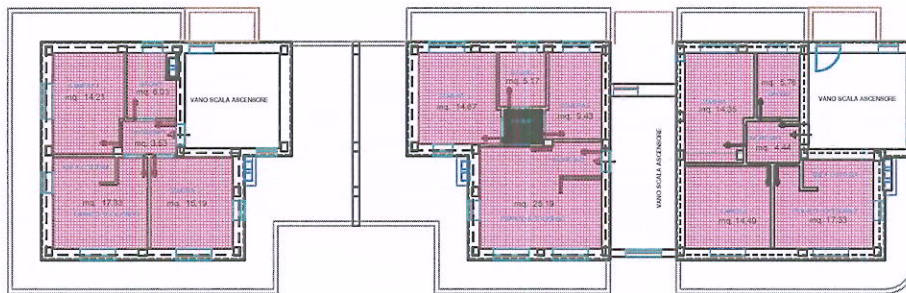
CALCOLO S.R. PIANO PRIMO

S.R. TOT. piano 1° = mq. 56,38+57,07+56,37+70,73 = mq. 240,55

D/2 - S.Residenziale mq. 56,30

C/2 - S.Residenziale mq. 57,07

B/2 - S.Residenziale mq. 56,37



D/2

CAMERA 1	mq. 14,21
CAMERA 2	mq. 15,19
PRANZO-SOGGIORNO	mq. 17,33
INGRESSO	mq. 3,53
BAGNO	mq. 6,12

D/2 - S.Residenziale mq. 56,38

C/2

CAMERA 1	mq. 14,67
CAMERA 2	mq. 9,43
PRANZO-SOGGIORNO	mq. 25,19
DISIMP.	mq. 2,61
BAGNO	mq. 5,17

C/2 - S.Residenziale mq. 57,07

B/2

CAMERA 1	mq. 14,49
CAMERA 2	mq. 14,35
PRANZO-SOGGIORNO	mq. 17,33
INGRESSO	mq. 4,44
BAGNO	mq. 5,76

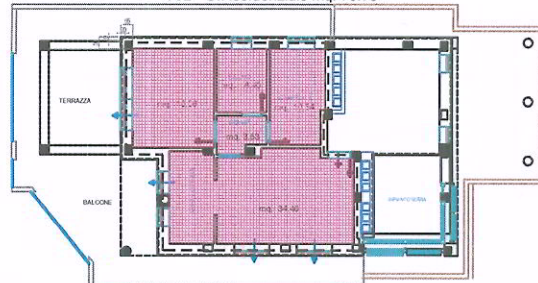
B/2 - S.Residenziale mq. 56,37

A/2

CAMERA 1	mq. 16,06
CAMERA 2	mq. 10,34
PRANZO-SOGGIORNO	mq. 34,40
DISIMP.	mq. 3,53
BAGNO	mq. 6,40

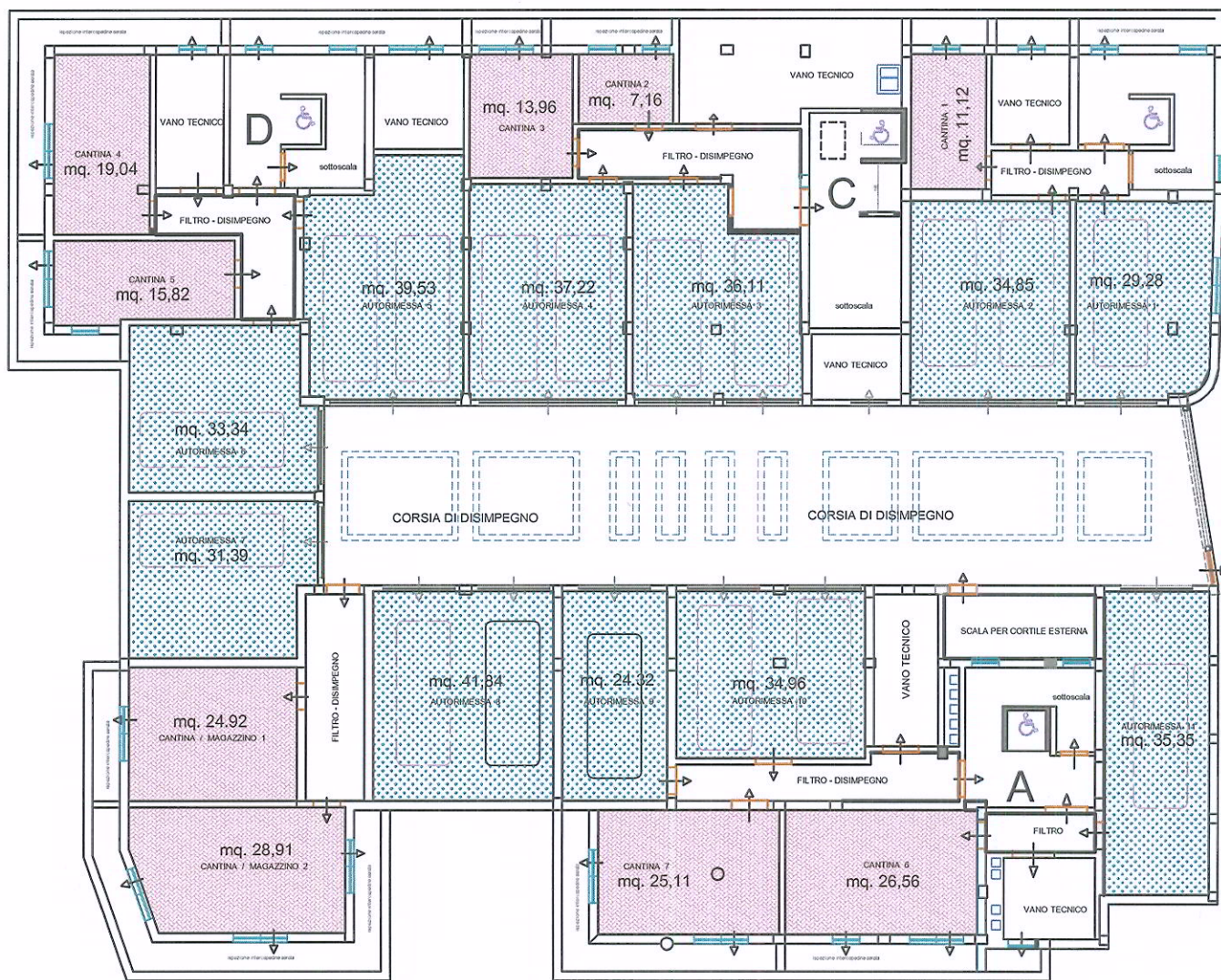
A/2 - S.Residenziale mq. 70,73

A/2 - S.Residenziale mq. 70,73



CALCOLO S.n.R PIANO INTERRATO

S.n.R. TOT. Piano Interr. mq. 121,77 + 53,83 + 378,19 = mq. 553,79



—	CANTINA 1	mq. 11,12
—	CANTINA 2	mq. 7,16
—	CANTINA 3	mq. 13,96
—	CANTINA 4	mq. 19,04
—	CANTINA 5	mq. 15,82
—	CANTINA 6	mq. 26,56
—	CANTINA 7	mq. 25,11

TOT. AREA S.n.R. CANTINE mq. 121,77

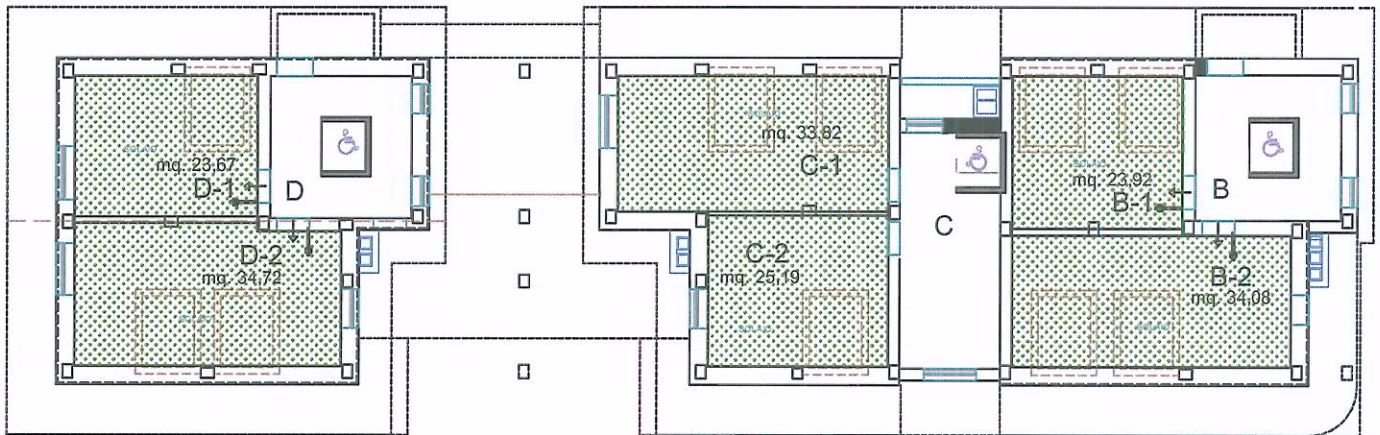
—	CANTINA / MAGAZZINO 1	mq. 24,92
—	CANTINA / MAGAZZINO 2	mq. 28,91
—	TOT. AREA S.n.R. CANTINE/MAGAZZ.	mq. 53,83

—	AUTORIMESSA 1	mq. 29,28
—	AUTORIMESSA 2	mq. 34,85
—	AUTORIMESSA 3	mq. 36,11
—	AUTORIMESSA 4	mq. 37,22
—	AUTORIMESSA 5	mq. 39,53
—	AUTORIMESSA 6	mq. 33,34
—	AUTORIMESSA 7	mq. 31,39
—	AUTORIMESSA 8	mq. 41,84
—	AUTORIMESSA 9	mq. 24,32
—	AUTORIMESSA 10	mq. 34,96
—	AUTORIMESSA 11	mq. 35,35

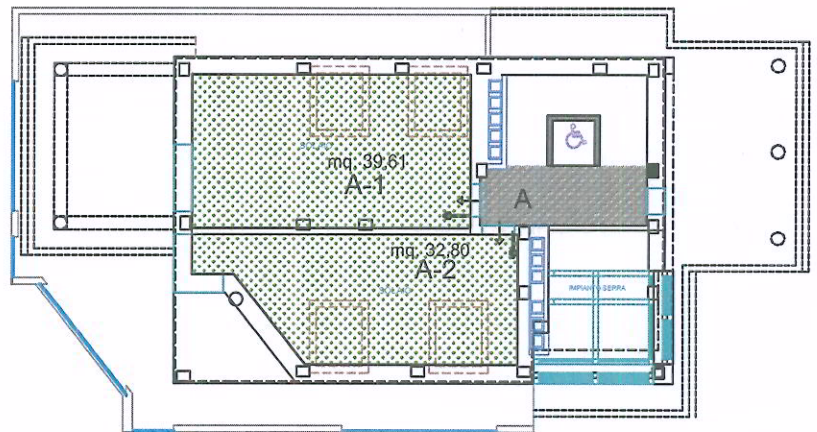
TOT. S.n.R. AUTORIMESSE mq. 378,19

CALCOLO S.n.R PIANO SOTTOTETTO

S.n.R. TOT. mq. 247,81



SOLAIO A-1	mq. 39,61
SOLAIO A-2	mq. 32,80
SOLAIO B-1	mq. 23,92
SOLAIO B-2	mq. 34,08
SOLAIO C-1	mq. 33,82
SOLAIO C-2	mq. 25,19
SOLAIO D-1	mq. 23,67
SOLAIO D-2	mq. 34,72
TOT. S.n.R. SOLAI	mq. 247,81



S.n.R. TOT. mq. $553,79 + 247,81 =$ mq. 801,60