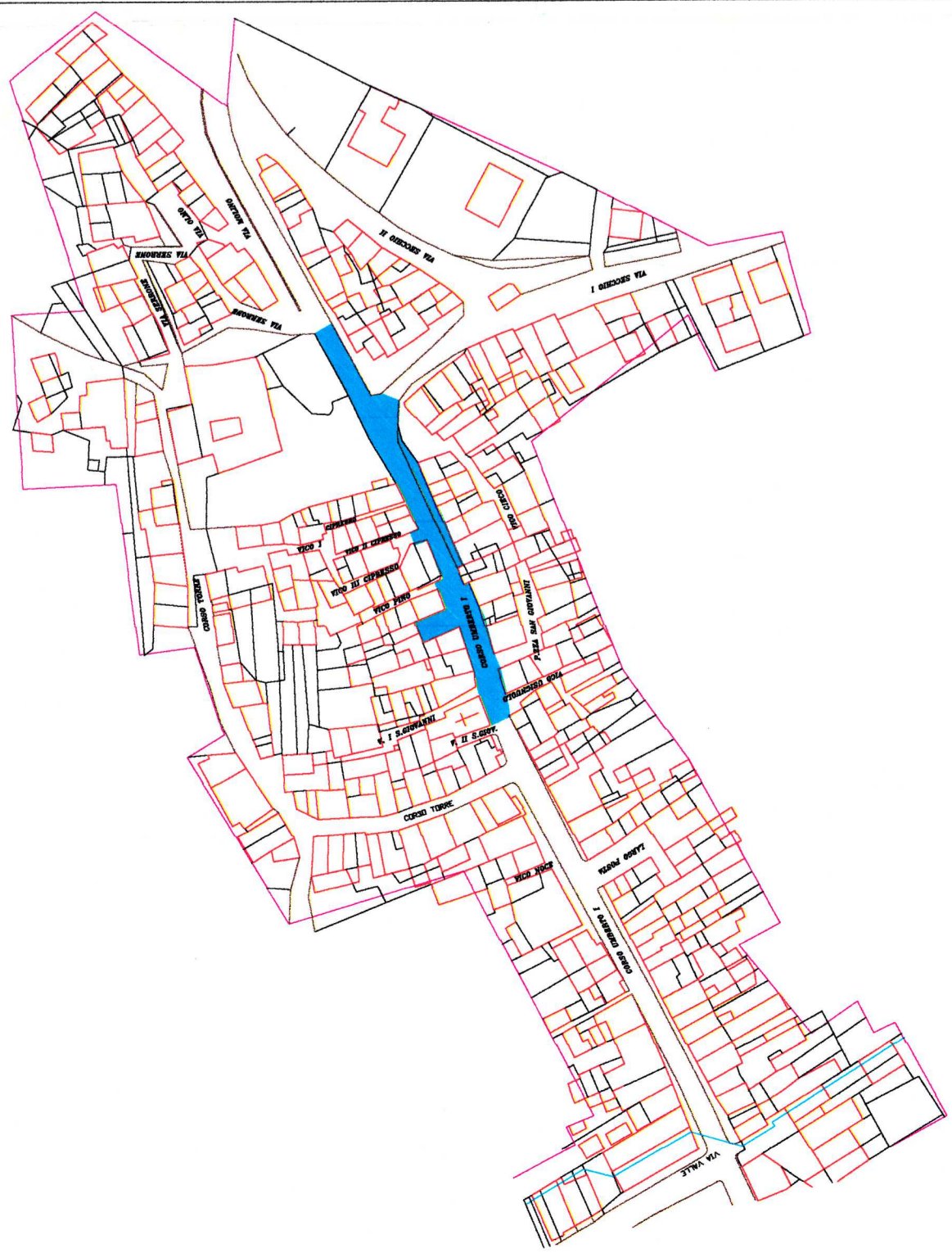


QUADRO D'UNIONE - 1:2000



181

118

117

116

115

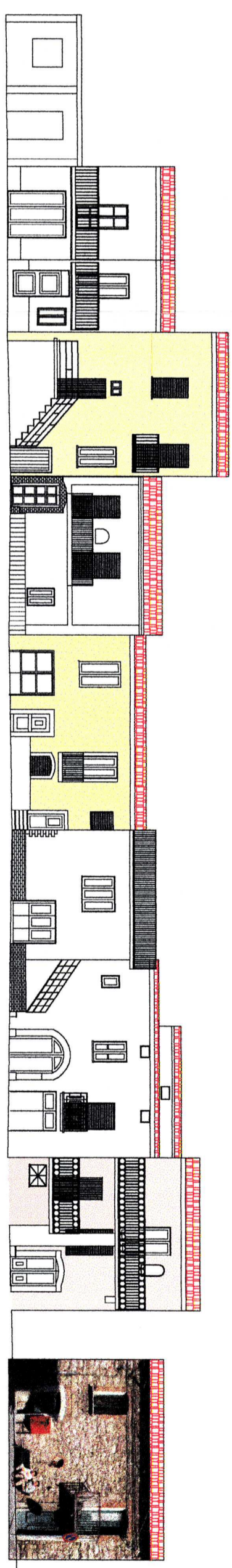
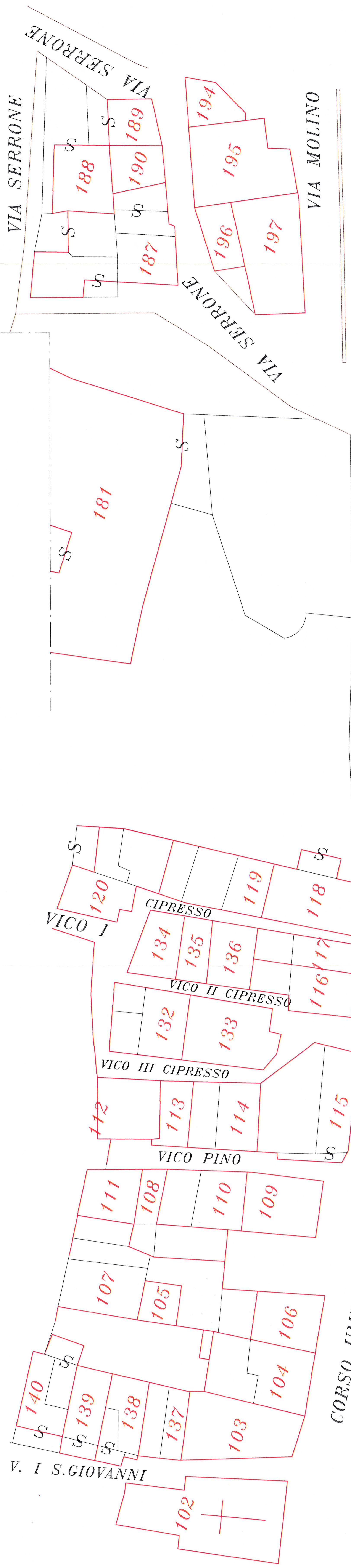
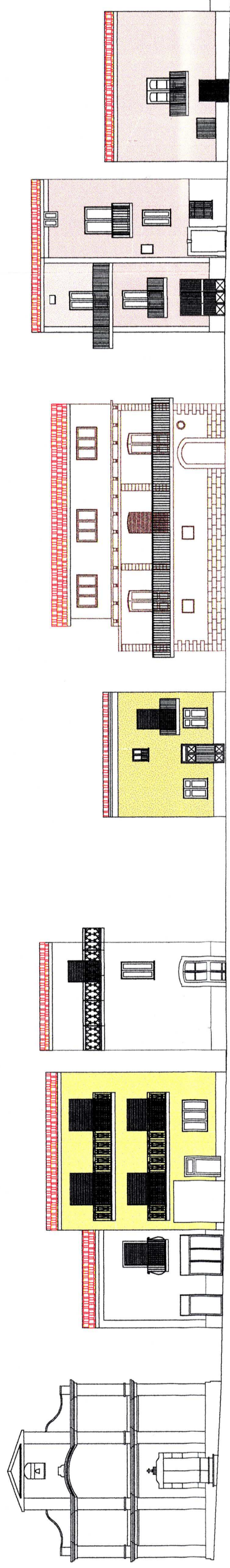
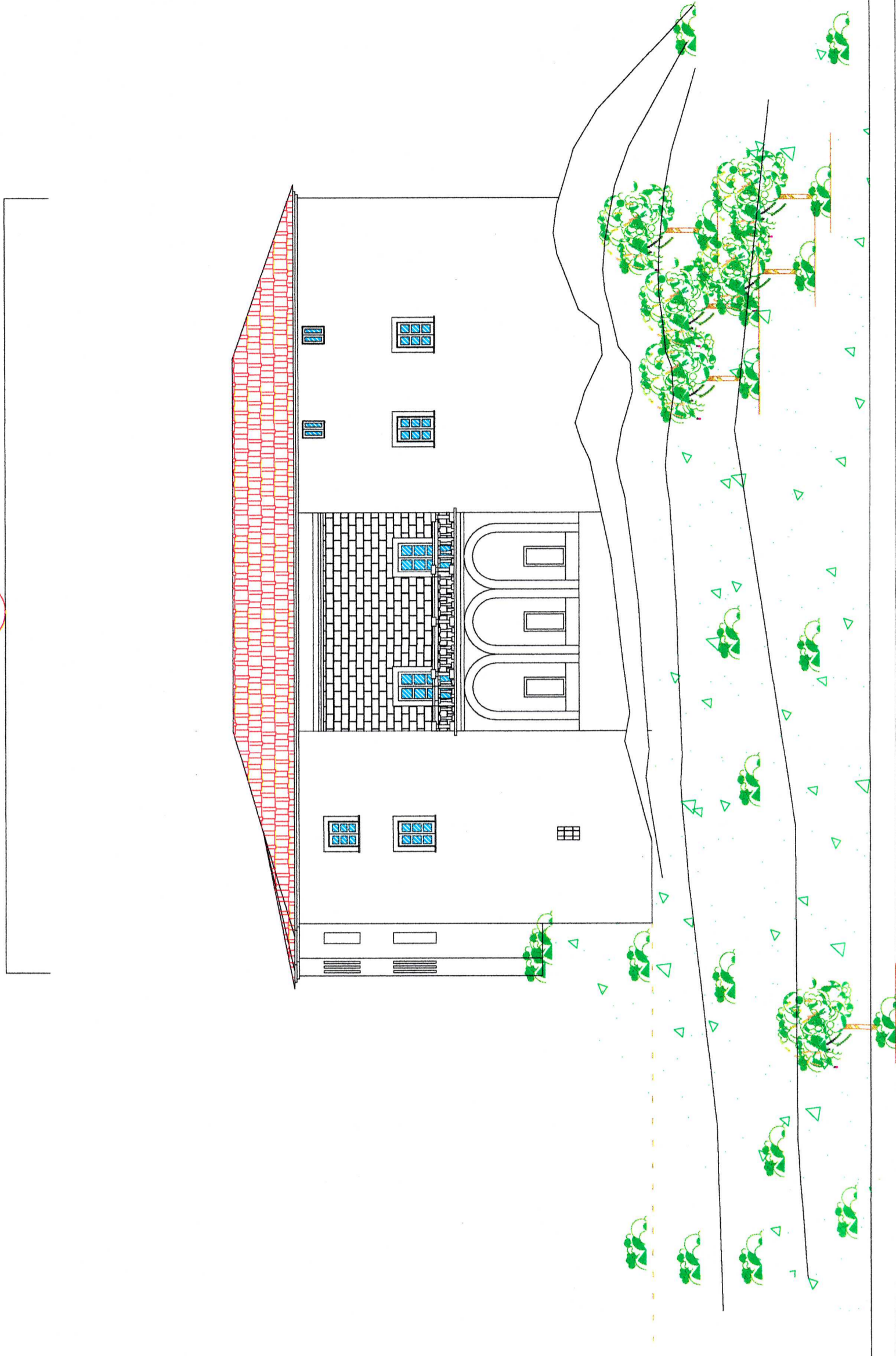
109

106

104

103

102



46

45

44

43

42

41

40

39

38

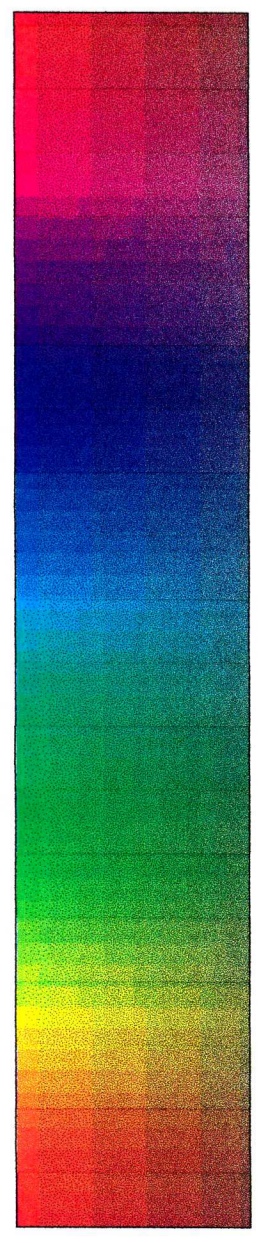
37

COMUNE DI SAN PIETRO AL TANAGRO
Provincia di Salerno

Data: Marzo 2000
Scala: 1:200
Tavola n° 3.2

PIANO DEL COLORE
ZONA A3

STATO DI FATTO
2° Isolato - Corso Umberto I (2)



Progettisti incaricati:
Arch. Claudio Di Donato - Ing. Giuseppe Mallardi - Ing. Giampaolo Tierno

