

ABACO SERRAMENTIDA SOSTITUIRE

Regione Piemonte



Città Metropolitana di Torino



COMUNE DI VERRUA SAVOIA

LOC. Valentino 1 – 10020 Verrua Savoia

**AVVISO PROGRAMMA OPERATIVO NAZIONALE (PON/IC)
"Imprese e Competitività 2014-2020" AVVISO C.S.E. 2025 -
Comuni per la sostenibilità e l'efficienza energetica –**

**SOSTITUZIONE DI CHIUSURE TRASPARENTI E SISTEMI DI
SCHERMATURA SOLARE DELL'EDIFICIO MUNICIPALE**

CUP: D54J25000130001

Elaborato:

SOSTITUZIONE SERRAMENTI

ABACO

Ufficio tecnico comunale di Verrua Savoia

Ubicazione intervento: MUNICIPIO Piazza Bezzo 1 10020 Verrua Savoia

Elaborato: **ABACO**

Data:

Aprile 2025

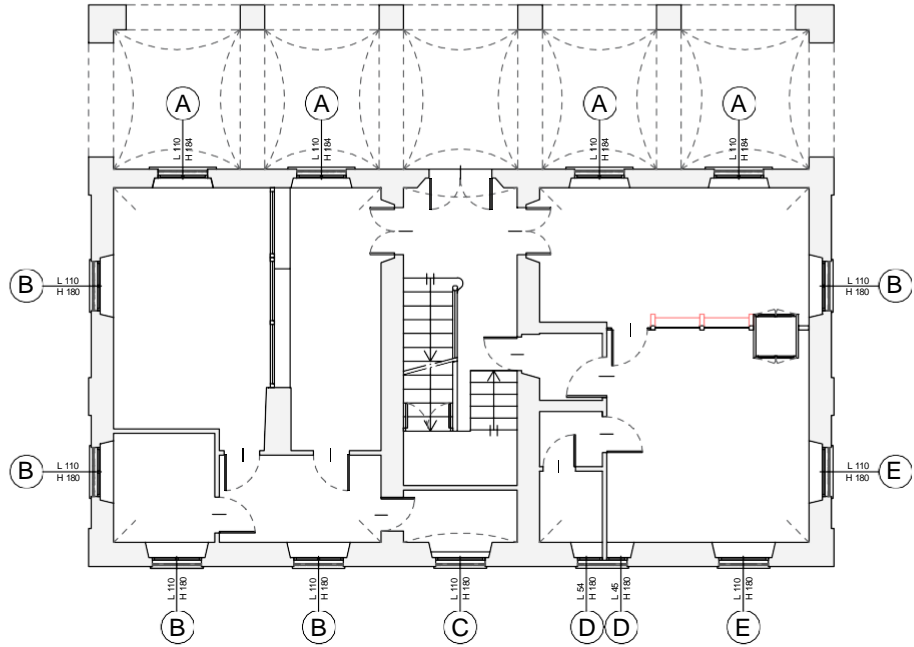
Responsabile del servizio

Ing. Isabella AGUSTA

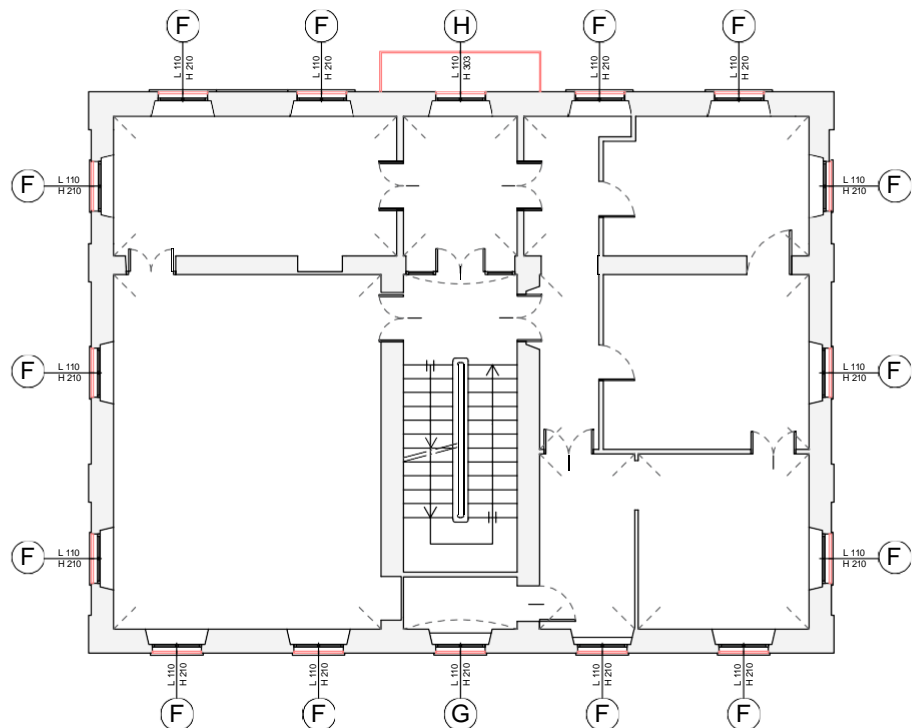
ABACO DEI SERRAMENTI IN PROGETTO

PIANO
TERRA

Serramenti
non soggetti
ad intervento
di sostituzione



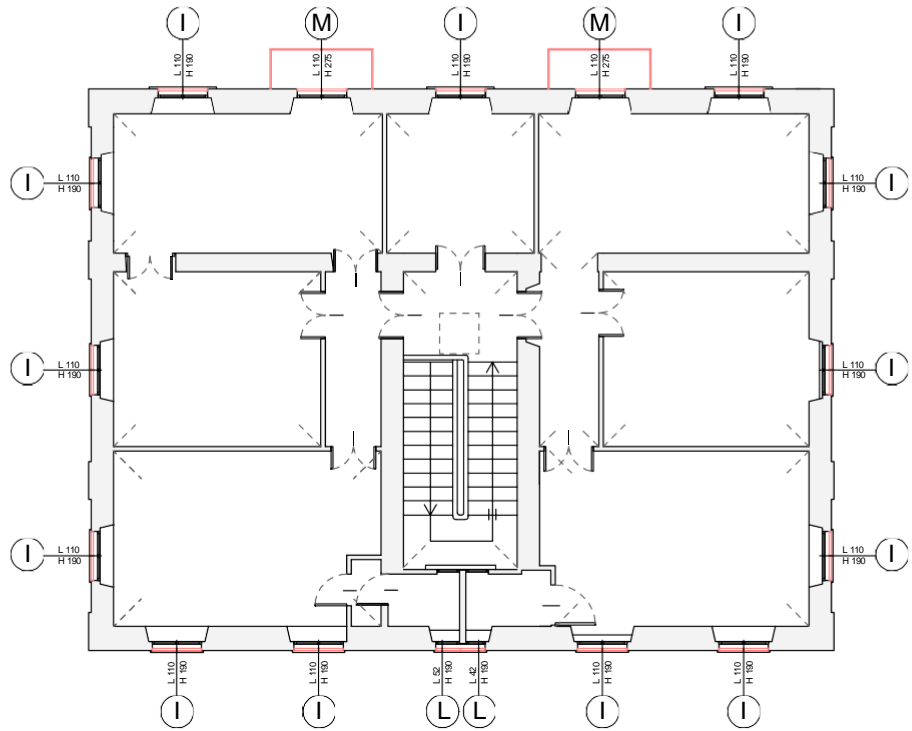
PIANO
PRIMO



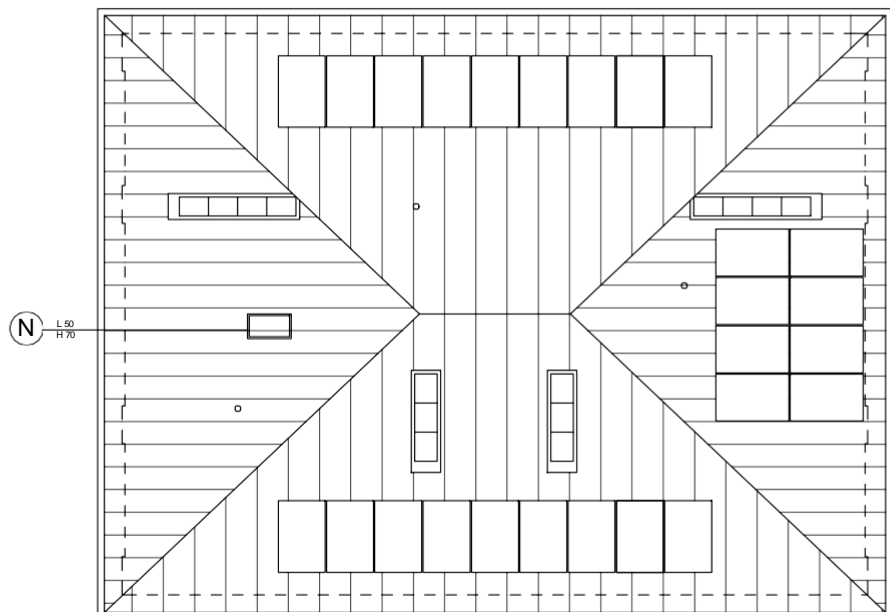
REGIONE PIEMONTE
CITTÀ METROPOLITANA di TORINO
COMUNE DI VERRUA SAVOIA

ABACO DEI SERRAMENTI IN PROGETTO

PIANO
SECONDO



COPERTURA

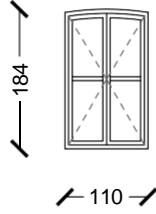


ABACO DEI SERRAMENTI IN PROGETTO

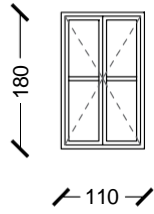
PIANO
TERRA

Serramenti
non soggetti
ad intervento
di sostituzione

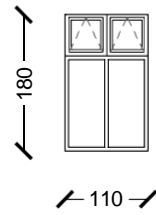
A - n°4



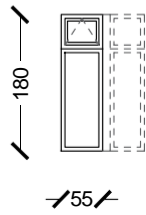
B - n°5



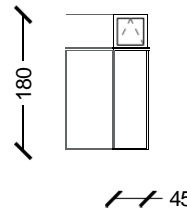
C - n°1



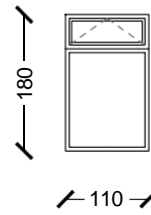
D1 - n°1



D2 - n°1

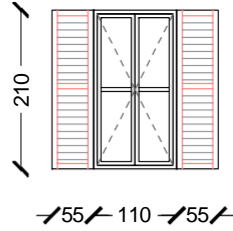


E - n°2

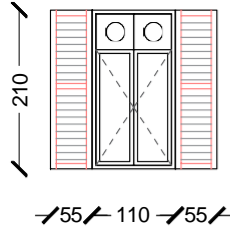


PIANO
PRIMO

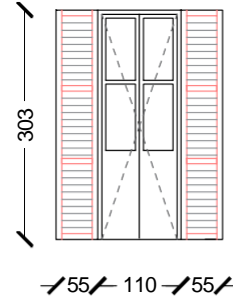
F - n°14



G - n°1

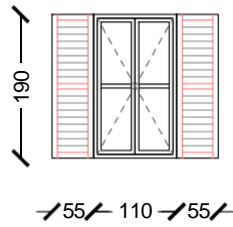


H - n°1

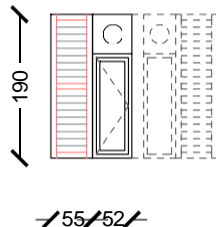


PIANO
SECONDO

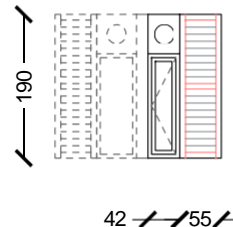
I - n°13



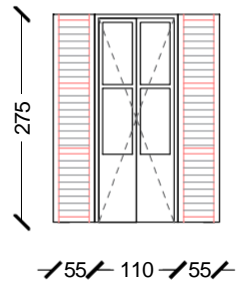
L1 - n°1



L2 - n°1

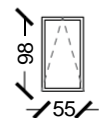


M - n°2



COPERTURA

N - n°1



Serramenti soggetti ad
intervento di sostituzione

N° PEZZI: 33

AREA TOT: 73.00 mq